

SAFE LIVING AT HOME



# Regia



The individual care bed  
with versatile options

International Edition

STIEGELMEYERGROUP



BURMEIER

# Regia – the low-height bed for protection, comfort and a homelike feel

When people in need of care live at home, their bed often becomes the focal point of day-to-day living. Sleeping, mealtimes, watching television, having conversations - the care bed is where many activities take place when the user's state of health or day-to-day condition make it difficult to get up. The bed should therefore create a safe and secure atmosphere through comfort and cosiness, promote the mobility of the resident and lighten the burden of caregiving relatives. Our Regia with the innovative Easy Switch system ideally satisfies these requirements.

The Regia is designed with customers in mind who are looking for a care bed that offers many different design options and modern technical support. As a low-height bed with a large height adjustment range, it promotes fall prevention while also enabling

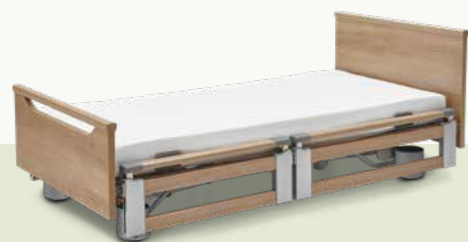
back-friendly care. The telescopic split safety side offers an ideal balance between protection and freedom.

Thanks to the Easy Switch system, it can be snapped on and off in seconds. This enables the bed to meet changing needs and makes it easy to adapt to new situations. With the Regia partner double bed, couples can enjoy harmonious hours for two again.

The Regia offers the option of firmly upholstered headboards, footboards and side panels. A choice of high-quality fabrics or imitation leather and a large selection of elegant wood decors transform the bed into a comfortable designer piece to suit every taste.



Cover: Regia with Primus headboard and Primus-Low footboard in Havana Cherry decor.



• **Large height adjustment range:**  
26 – 80 cm

• **High safe working load:**  
225 kg

• **Individually adjustable:**  
- Mattress base width 90 or 100 cm  
- Telescopic split safety side for flexible protection  
- Easy Switch for quick no-tool assembly of safety sides, headboard, footboard and panels



## Vibrant fabrics

Headboards and footboards are available with attractive upholstered fabrics. Where split safety side elements have not been included, you can also use panels in a wood, fabric or leather look. In this way, the bed fits every style of home design.



## Stylish imitation leather

If the Regia is covered all round with stylish imitation leather, it no longer looks like a care bed. Users nevertheless enjoy all the advantages of an electrically adjustable bed. Safety sides or elements in a different look can be retrofitted at any time. This lets the bed change to keep pace with your requirements.



## Regia partner double bed

• **Flexible senior bed for couples:**  
- Individually adjustable mattress base rests  
- Comfortable sitting position  
- The two halves of the bed can easily be separated and put back together again  
- Attractive appearance

## Contents

2 Introduction

4 The Regia

5 The Regia partner

7 Safety sides

8 The Easy Switch system

10 Height adjustments

11 Comfort functions

13 24-volt drive system

14 The Burmeier app

15 Mattresses

16 Accessories

18 Technical data

19 The Stieglmeyer-Group



The elegant Regia low-height bed can be adapted to meet every comfort and protection need.

## Regia

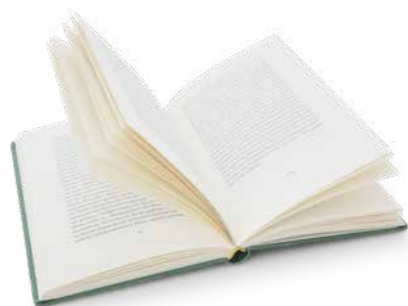
A bed to satisfy discerning tastes

A care bed offering great comfort and safety that promotes the **mobility** of residents, looks good and is easy on the purse - that's the new Regia in a nutshell. This model provides both private customers and discerning senior residences with a bed that adapts flexibly to changing requirements.

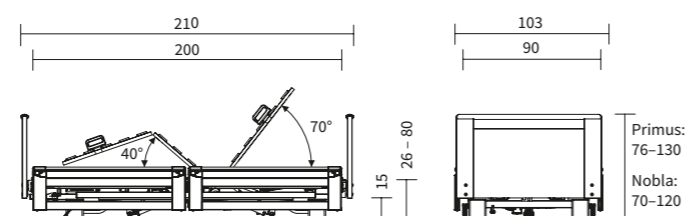
Being a **low-height bed** with a large height adjustment range of 26 to 80 cm and optional split safety sides, it protects Regia residents from fall injuries without the use of liberty-depriving measures. This follows the philosophy of the **Werdenfels approach** not to restrict the freedom of those in need of care.

### Strong advantages

- Care height of up to 80 cm allows for back-friendly working with the bed
- 225 kg safe working load makes it suitable even for heavy residents
- 100 cm mattress base width and approximately 20 cm bed extension optionally available
- 4-section metal mattress base with electrically adjustable raised leg position
- Selectively lockable handset



External dimensions/height adjustment range:



#### Special features:



Elegant upholstery or an attractive wood decor, side panels or safety sides – with the Regia partner double bed, couples are spoilt for choice.

## Regia partner

The double bed for living a fulfilled everyday life

Increasing unsteadiness and a growing need for care in older age presents many challenges for couples. One of these concerns the question of a **shared bed**. Often, one partner moves into a care bed while the other remains alone in the double bed. The familiarity and intimacy of the relationship suffers as a result. Our Regia partner double bed offers an ideal solution in this case.

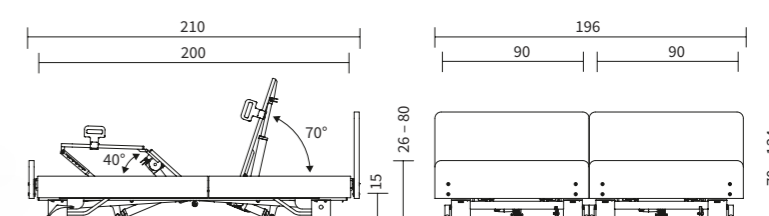
The Regia partner combines the **care-giving strengths** and comfort of a single bed with **safety features** specially designed for couples. At the same time, the two halves can easily be separated and rejoined if necessary to provide care at the bedside, or if the partners wish to sleep in separate rooms for a while.

### Strong advantages

- Large height adjustment range of 26 – 80 cm
- Two mattress bases measuring 90 x 200 cm each
- Safe working load of 225 kg per mattress base
- Backrest and leg rests on the mattress bases individually adjustable
- Height adjustment and a reverse-Trendelenburg position of the bed corpus are always synchronous, so do not pose a pinching hazard for users
- Bed frame surrounds and safety sides can be flexibly adapted with the Easy Switch system



External dimensions/height adjustment range:



#### Special features:





▲ The easy separation of the two halves of the bed facilitates bedside care and makes it easier to clean the room.

## Comfort and safety for couples

The Regia partner provides individual comfort and protection for the two users, and also reduces the burden on carers. The **backrest and leg rests** on the two mattress bases can be **adjusted independently** of each other, so one person can read, for example, while the other is asleep. Each half of the bed has **its own handset** for this purpose.

The **corpus of the bed**, on the other hand, always moves **synchronously** within its large height adjustment range of 26 to 80 cm and when it tilts to a reverse-Trendelenburg position. This prevents trapping hazards for users that could otherwise occur due to gaps opening up between the mattress bases. Optional split safety sides for customised safety can be retrofitted at any time.



▲ Each half of the bed comes with its own handset as standard for this purpose.



▲ While the corpus of the bed always moves synchronously, the mattress bases can be adjusted individually. This makes it possible, for example, to set the bed to a comfortable sitting position.

### SAFE LIVING AT HOME

#### Sitting position

Electrically adjustable double beds are often little more than single beds placed next to each other but offering few functional options. The Regia partner, however, will convince you otherwise as it can tilt to provide a comfortable sitting position. This facilitates breathing as well as taking meals in bed, and promotes an active everyday life at eye level with other people.



▲ Raising the safety side at the head end to the second stage offers an ideal balance between freedom and protection, while still meeting the relevant standards.



▲ Raised to the first level at the head end, the telescopic split safety side (TSG) is an orientation aid and enables users to get in and out of bed unassisted.



▲ Raising the safety side diagonally gives a reassuring feeling of safety.



▲ Users at risk of falling are reliably protected by fully raising the safety side.

## Modern safety sides

The Regia's **telescopic split safety side (TSG)** is **easy to raise without any effort**. If only the head end is raised, the resident still has ample room to get in and out of bed. Optionally, you can equip the bed with safety sides at the head end only - being 110 cm long, these elements provide **standard-compliant protection**.

The telescopic safety side (TSG) is easy to raise in two stages. Raised to the first level, it offers the resident orientation and is so discreet that the eye can wander unhindered into the room. The second level provides full protection. For a reassuring feeling of support and safety, it is also helpful to raise the bars to a diagonal position. All elements of the telescopic safety side (TSG), as well as the side panels and headboard and footboard, can be attached and removed in just a few easy steps - this is made possible by the innovative **Easy Switch system**. In this way, the Regia adapts to every need and promotes the mobility of the person being cared for.

The optional **full-length safety side (DSG)** is recommended for residents with a high risk of falling and where thick anti-decubitus mattresses are used. It is also effortless to attach and remove - with the **Easy Click system**.



▲ The optional full-length safety side (DSG) can be fitted in seconds using the Easy Click system.



▲ With the full-length safety side, residents at risk of falling enjoy maximum protection (image shows an example).



# The patented system for adaptable care beds with standard-compliant safety

Choose the Regia with the telescopic split safety side or without a safety side and benefit from our flexible Easy Switch system. The Easy Switch principle is as easy as it is impressive: The safety side elements, the headboard and footboard as well as the side panels can be attached and removed **without tools**. This is possible thanks to easy-to-use fasteners that snap into place securely and cannot be accidentally opened by the resident. Headboards and footboards from the Nobla series and panels are available as an option with attractive fabric or imitation leather upholstery.

Thanks to the Easy Switch system, the Regia can easily be fitted any time with safety sides or a new look and **adapted** to your requirements. It becomes a bed that develops with you and supports you in every phase of your life. The removable safety sides are quick to convert to whatever care situation may arise. They also make it considerably easier to assemble the bed.

# Modular design for tool-free assembly

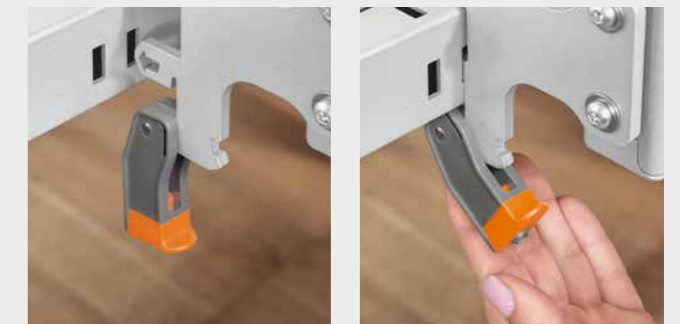
### Replace headboards in seconds whenever required

- Homelike design variants, with optional handle bars
- Attractive wood decors, fabrics and faux leather to choose from
- Headboard, footboard and side panels freely combinable however you wish

### SAFE LIVING AT HOME

## Easy Switch for added flexibility and safety

Beds with Easy Switch meet the different protection needs of residents and can be customised to suit any taste. The flexible safety side provides standard-compliant protection without restricting the mobility of the person in need of care.



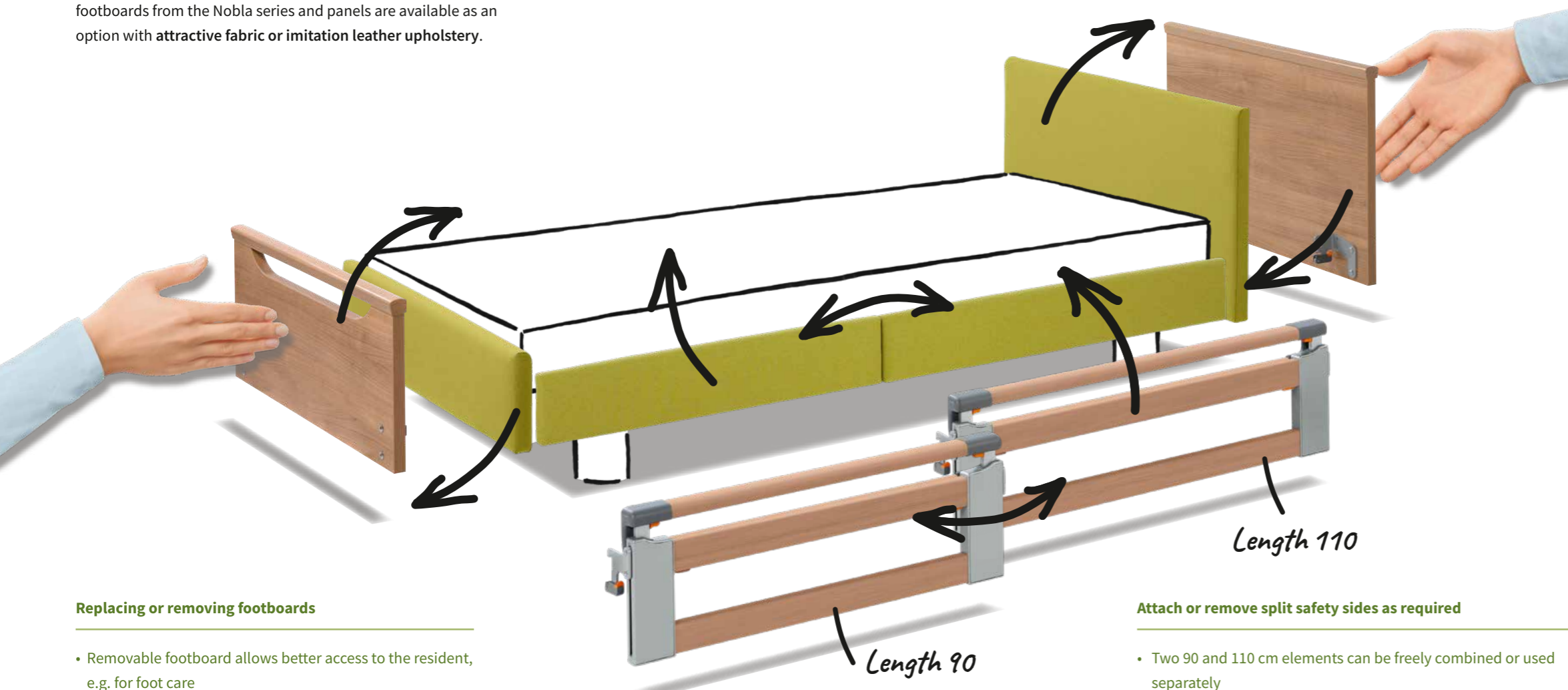
▲ All Easy Switch elements are inserted in the bed frame and attached with easy-to-operate fasteners.

▲ Simply press the fastener upwards.



▲ The fastener snaps into place securely – and the element is attached.

▲ To release the fastening, pull the orange safety catch towards you and press the fastener down.



### Replacing or removing footboards

- Removable footboard allows better access to the resident, e.g. for foot care
- Choice between a high footboard for a feeling of security or a low footboard for an unobstructed view
- Attractive wood decors, fabrics and faux leather available to choose from

### Attach or remove split safety sides as required

- Two 90 and 110 cm elements can be freely combined or used separately
- Use of only a 110 cm safety side element at head end provides standard-compliant protection
- Use of only a 90 cm safety side element at head end provides reassurance and orientation and leaves ample space to get in and out of bed

**! Safety sides can be freely combined:  
• 110/90 or 90/110**





The lowest position of only 26 cm protects against fall injuries.

## Always the right height



▲ The automatic intermediate stop at about 40 cm is ideal for many to get in and out of bed.



▲ The ergonomic care height of up to 80 cm protects relatives' backs.

**Low-height beds** play an important role in preventing injuries caused by falls. From a position close to the ground, there is only a slight risk for the resident, even if the safety side is not raised. The Werdenfels approach follows the philosophy that liberty depriving measures (DoLS) can be avoided in this way.

With its **large height adjustment range** of 26 to 80 cm, the Regia satisfies all the requirements of the care sector. The lowest position offers the resident optimal protection in bed. The bed can be easily and intuitively adjusted with the handset. With its **3-stop function**, it automatically stops at an intermediate position of around 40 cm – the ideal height for conveniently getting in and out of bed. Raised to the highest position of 80 cm, the Regia enables carers to **work ergonomically at hip-level**.

### Strong advantages

- Large height adjustment range of 26 – 80 cm
- Infinitely variable adjustment with easy-to-operate handset
- Low-height bed promotes fall prevention without the use of deprivation of liberty safeguards
- Ergonomic nursing height protects the back of the carers and relatives and maintains their health
- Ideal entry and exit height promotes the mobility of the resident



In the sitting position, users can participate in everyday life at eye level with other people.

## Comfort

Enjoy everyday life with new vitality

The Regia, with its flexible adjustment options, allows residents to participate in day-to-day life on an equal footing with others. Using the handset, the bed can be adjusted to a **reverse-Trendelenburg position** of up to 15°. When combined with a raised backrest, which can be adjusted to 70°, residents can adopt a comfortable **sitting position**. People in need of care are able to sit upright without any effort. In this position, nothing stands in the way of a lively conversation or a cosy evening in front of the television. Eating meals is also much easier from a sitting position. At the same time, the risk of aspiration decreases.

The lower leg rest can be raised to a horizontal position with the help of the handset if a **raised leg position** is required for health reasons.



### SAFE LIVING AT HOME

#### Regia movo

When people can no longer get out of bed very often, a mobile care bed makes everyday life more lively. The Regia movo model is effortless to move, and can easily be manoeuvred into the living room or onto the patio.

- Large 100-mm double castors for easy manoeuvring
- Directional castor facilitates steering
- Height adjustment range 28 - 83 cm
- Central castor locking (standard on all Regia models)



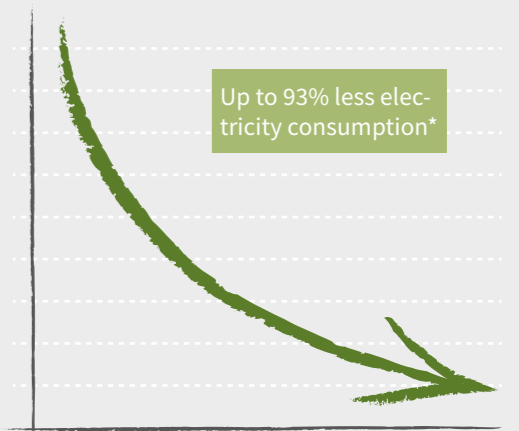
The Regia low-height bed protects against falls without restricting the freedom and comfort of residents.



◀ Its SwitchMode power supply unit produces a 24-volt safety extra-low voltage directly at the socket.

SAFE LIVING AT HOME

*Energy saving*



\* Compared to 230-volt systems, assuming approx. 5 adjustments per day

## 24-volt drive system

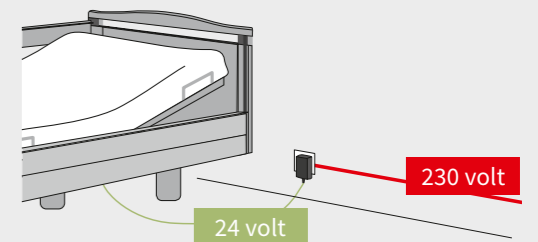
Burmeier's innovative 24-volt drive system provides an ideal safety standard for caring for people at home. All live 230-volt components are banished from the care bed. Incorporated directly in the mains plug unit is the **SwitchMode** electronic power supply converter. Residents therefore enjoy a high level of safety.

The bed has no current carrying components except when the handset is in use. Power consumption drops by up to 93% as a result. Even more costs and effort are saved by the fact that leakage current measurements, certified by **TÜV Rheinland**, are no longer necessary. In principle, the required leakage current measurement must be carried out every 2 years for care beds in commercial use. The use of the 24-volt system prolongs this interval so that measurements are not necessary within the expected lifetime of the bed. The applicable lifetime is indicated in the operating instructions.

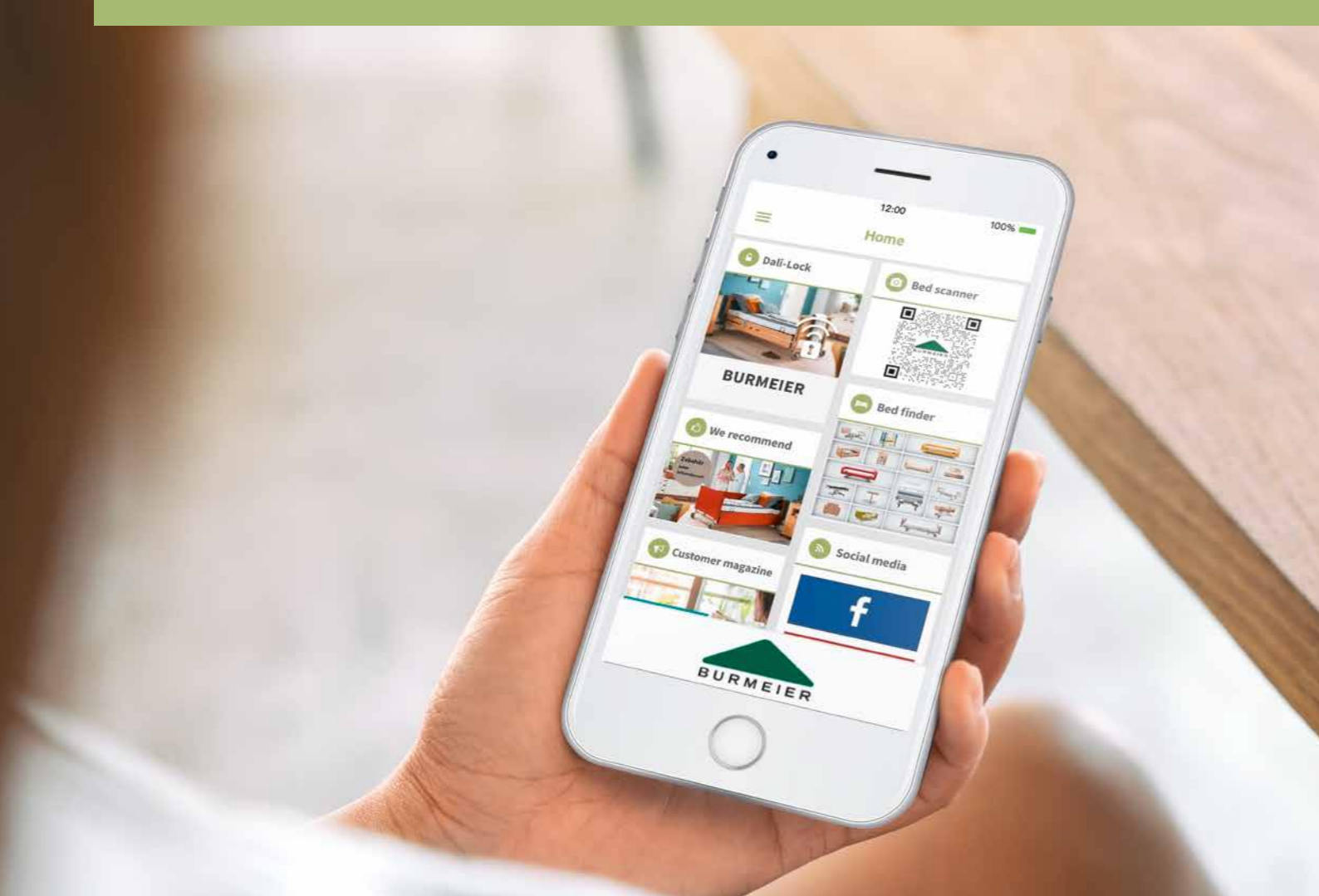
Even when taking the bed into service, leakage current measurements are unnecessary as these have already been carried out in the factory. It is also not necessary for an **electrically trained person** to be involved in assembling the bed – this saves the bed operator additional costs.

SAFE LIVING AT HOME

*Strong advantages*



- Safety extra-low voltage starting from the transformer at the power socket
- No 230-volt components on the bed
- No leakage current measurements are necessary after installation or throughout the entire expected service life of the bed
- A test certificate can be downloaded for every bed



## The Burmeier app

The digital helper for your bed

Our Regia is a bed that can be operated intuitively without lengthy explanations. However, questions about the bed or requests for accessories may crop up during day-to-day care. In this case, the Burmeier app is an ideal helper. This **free app** is aimed at specialist dealers, caring relatives and people in need of care.

With the app's **bed finder** you can find the Burmeier model you are looking for in a matter of minutes. You can also find operating instructions and watch helpful videos there. Use the **"accessories"** tile to find attractive additional equipment for your bed, such as a tray or a cosy reading lamp. Make your choice and order the product from your nearest specialist dealer, who you can find equally quickly using the **"dealer search"** tile.



App Store



Download the Burmeier app now free of charge from your store.

### SAFE LIVING AT HOME

## Strong advantages

- For use with Apple and Android smartphones
- Quick access to plenty of important information and answers about all Burmeier products
- Practical dealer search
- Easy access to our social media channels and our FORUM customer magazine, with interesting news from the world of health and care



The Sky-fit premium mattress (shown here without cover) adapts perfectly to the Regia's mattress base.

Available for mattress base dimensions:

**Sky-fit**  
90 x 200 cm  
100 x 200 cm

**Comfort-fit**  
90 x 200 cm  
100 x 200 cm

**Basic-fit**  
90 x 200 cm  
90 x 220 cm  
100 x 200 cm  
100 x 220 cm

## Mattresses

Enjoy a good night's sleep

Treat yourself or your loved one to even more comfort by choosing a Burmeier mattress for your Regia. Our care bed mattresses precisely follow any adjustments to the backrest and thigh rest, and thereby allow health-promoting lying positions to unfold their full benefit. The Sky-fit and Comfort-fit models are also reversible mattresses with one smooth and one cutout side. As a result, these mattresses are never "too hard" or "too soft" - they can simply be turned over and offer two different lying experiences.



▲ Sky-fit model with high-quality Skytherm® top layer.

### Sky-fit – the premium model

- High-quality dual-layer mattress with a 2 cm Skytherm® top layer and a 12 cm cold foam base layer
- Cutouts in the base layer ensure optimum adaptation to the mattress base
- Both sides can be used as lying surfaces
- Reinforced edge zones allow users to sit comfortably on the side of the bed
- Removable reversible cover, one side polyurethane (PU), the other side polyester and viscose, can be washed in a commercial washing machine
- Compression hardness 5.0 kPa (edge zones), 4.0 kPa (base layer), 2.5 kPa (top layer), density 50 kg/m<sup>3</sup> (base layer), 40 kg/m<sup>3</sup> (top layer)



▲ Comfort-fit model with edge-zone reinforcement.

### Comfort-fit – the mid-range mattress

- The comfortable mattress with a core made of elastic polyurethane cold foam (14 cm)
- Cutouts in the base layer ensure optimum adaptation to the mattress base
- Both sides can be used as lying surfaces
- Reinforced edges protect against rolling out of bed
- Removable reversible cover, one side polyurethane (PU), the other side polyester and viscose, can be washed in a commercial washing machine
- Compression hardness 5.0 kPa (edge zones), 4.0 kPa (base layer), density 40 kg/m<sup>3</sup>



▲ Basic-fit model.

### Basic-fit – the entry-level model

- Single layer mattress made of comfortable polyurethane (12 cm)
- White removable PU cover, can be washed in a commercial washing machine
- Compression hardness 4.5 kPa, density 40 kg/m<sup>3</sup>





▲ The approximately 20 cm **bed extension** is simply inserted into the bed frame. Suitable mattress pieces to extend the mattress are also available.



▲ The **comfort mattress base** comprises 50 free-floating spring elements.



▲ The **linen holder** is particularly practical when making beds.



▲ **Foam leather covers** protect from knocks against the safety side.



▲ The reading lamp can be selected for insertion into the lifting pole sleeve or for attachment to the lifting pole.



▲ The **underbed light** provides better orientation at night and creates additional safety.



▲ With the flexible **transmitter holder**, the handset is always in the right place.



▲ With the 1.40 m **extension lead**, the handset can be used anywhere in the room.

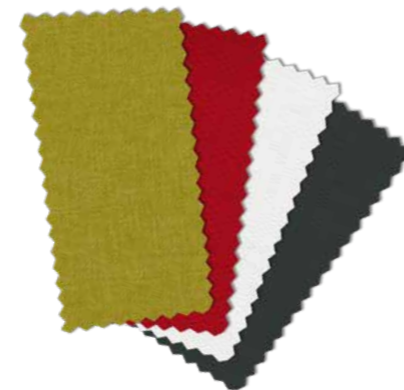


▲ **Wall deflection rollers** protect the bed and room furnishings while moving or adjusting the height of the bed.

## Practical accessories

With original Burmeier accessories, your Regia is transformed into a tailor-made bed offering even greater comfort and protection. The approximately 20 cm **bed extension**, for example, is recommended for very tall residents. This is simply inserted into the bed frame at the foot end. For beds with split safety sides, **two 110 cm long elements** can cover the extended mattress base on request.

Accessories such as the **foam leather cover** for the safety side or the **underbed light** for better orientation at night considerably increase the resident's safety. The **comfortable mattress base** with its free-floating elements, the **document holder** or the **linen holder** ensure more comfort and relief in everyday life.



▲ **Fabrics:**  
Light green Tiba 6210  
Red Tiba 3210

▲ **Imitation leather:**  
White 1-1142-197  
Anthracite 1-1142-395

## Decors<sup>1)</sup>



▲ Havana Cherry



▲ Lindberg Oak



▲ Natural Beech



▲ Royal Maple



▲ Real Cherry

<sup>1)</sup> Regia partner: Natural Beech and Havana Cherry

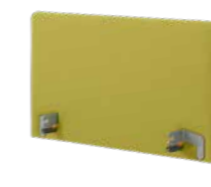
## Headboards/footboards<sup>2)</sup>



▲ Primus closed-surface headboard, with a handle bar at the foot end (wood decors only)



▲ Primus headboard, Primus-Low footboard (wood decors only)



▲ Nobla (wood decor or upholstered, longer delivery)



▲ Nobla headboard, Nobla reha footboard (wood decor or upholstered)



▲ Prinzino (wood decors only, longer delivery)

<sup>2)</sup> Regia partner: only available with the combination Nobla or Nobla mala, wood decor or upholstered

# Equipment and options

Features	Regia	Regia partner
Mattress base 90 × 200 cm	✓	–
Mattress base 100 × 200 cm	0	–
Mattress base 2 x 90 x 200 cm	–	✓
Height adjustment	26 – 80 cm Regia movo: 28 – 83 cm	26 – 80 cm
Safe working load	225 kg	2 x 225 kg
Four-section metal slat mattress base with sliding backrest	✓	✓
Electric raising of the lower leg rest (21 cm)	✓	✓
Reverse-Trendelenburg position (15°)	✓	✓
4 central locking castors, Ø 50 mm (Regia movo: Ø 100 mm)	✓	✓
Linak 24-volt drive system	✓	–
Primus head and footboard (only wood decors)	0	–
Primus headboard and Primus-Low footboard (only wood decors, not available with DSG full-length safety sides)	0	–
Prinzino head and footboard (only wood decors)	0	–
Nobla head and footboard (wood decor or upholstered, not available with DSG)	0	0
Nobla headboard and Nobla reha footboard (wood decor or upholstered, not available with (DSG) full-length safety sides)	0	0
Havana Cherry, Lindberg Oak, Natural Beech, Royal Maple, Real Cherry decors*	0	Natural Beech, Havana Cherry
Telescopic safety side (TSG) with Easy Switch		
– 2 elements 110/90 cm, additional side panels included if required	0	0
– 2 elements 110/110 cm, additional side panels included if required	0	0
– 2 elements 90/90 cm, additional side panels included if required	0	0
– No safety side, 4 side panels	0	0
– Padded side panels	0	0
Full-length safety side (DSG) with Easy Click on both sides	0	–
Full-length safety side (DSG) with Easy Click on one side, combined with TSG/side panels	0	–
Bed extension (approx. 20 cm)	0	0 (on both sides only)
Patient lifting pole with triangular grab handle	0	0
Under bed light	0	–
CPR release by battery	0	0
Foam leather cover (available for telescopic (TSG)/full-length (DSG) safety side)	0	0 (TSG only)
Reading lamp	0	0
Linen holder	0	–
Wall deflection rollers (choice of 2 or 4 rollers)	0	–
Comfort mattress base	0	0
Flexible transmitter holder for handset	0	–
Handset extension lead (1.40 m)	0	–
Trendelenburg handset (for nursing homes only)	0	–

\* Real Cherry available for Primus and Primus-Low headboard/footboard only

✓ = standard feature  
0 = available as an option

Further price/  
configuration  
information  
from  
[www.burmeier.com](http://www.burmeier.com)



## Custodians of values Shapers of the future

### STIEGELMEYERGROUP

#### Custodians of values

Our company was founded in Herford in 1900 and is still a family-run enterprise today. Respect and a sense of responsibility towards our customers, employees and partners form the basis for our day-to-day work. Based on these values and our many years of experience, we offer our customers all over the world high-quality products, solutions and services to meet the needs of the care and healthcare sectors.

#### Shapers of the future

In order to cope with rapid changes in the care and healthcare sectors, we develop all our products ourselves. Creating innovations and visions of what care will be like in future are the goals we pursue. We maintain regular contact with our customers in order to support them in their daily tasks. Implementing tomorrow's trends today is a successful tradition of ours.

#### Our expertise

Hospital

Nursing home

Homecare

Lifestyle beds

Contract furniture

Service



The Stiegelmeier-Group is your international partner for hospitals and care facilities and, with the Burmeier brand, also for home care. We support our customers with practical products, solutions and services, which we constantly develop further.

- Founded in 1900 and still family-run today
- Employs 1,100 members of staff worldwide
- Production of all core products in our own factories
- Product development and manufacture in Germany
- Services, training and process optimisation at the customer's site
- International certification and export to more than 60 countries
- Sales companies in Belgium, Finland, France, the Netherlands, Poland and South Africa

Our brands





**Burmeier GmbH & Co. KG**  
Industriestraße 53  
32120 Hiddenhausen  
Phone +49 (0) 5223 9769 - 0  
Fax +49 (0) 5223 9769 - 090  
info@burmeier.com  
www.burmeier.com

A Stieglmeyer-Group company

## STIEGELMEYERGROUP

### Hauptsitz / Headquarters

---

*Deutschland / Germany*  
**Stieglmeyer GmbH & Co. KG**  
Ackerstraße 42  
32051 Herford  
Phone +49 (0) 5221 185 - 0  
Fax +49 (0) 5221 185 - 252  
info@stieglmeyer.com  
www.stieglmeyer.com

*France*  
**Stieglmeyer SAS**  
16 Avenue de l'Europe  
Bâtiment SXB1  
67300 Schiltigheim  
Phone +33 (0) 4 7238 - 5336  
contact@stieglmeyer.fr  
www.stieglmeyer.fr

*South Africa*  
**Stieglmeyer Africa (PTY) Ltd**  
The Estuaries · Century City  
Cape Town, 7441  
Phone +27 (0) 21 555 - 1415  
Fax +27 (0) 21 555 - 0639  
info.southafrica@stieglmeyer.com  
www.stieglmeyer.co.za

*Nederland / Netherlands*  
**Stieglmeyer BV**  
Peppelenbos 7  
6662 WB Elst  
Phone +31 (0) 345 581 - 881  
info@stieglmeyer.nl  
www.stieglmeyer.nl

*Suomi / Finland*  
**Stieglmeyer Oy**  
Ahjokatu 4 A  
15800 Lahti  
Phone +358 (0) 3 7536 - 320  
Fax +358 (0) 3 7536 - 330  
stieglmeyer@stieglmeyer.fi  
www.stieglmeyer.fi

*Polska / Poland*  
**Stieglmeyer Sp. z o.o.**  
86-212 Stolno  
Grubno 63  
Phone +48 56 6771 - 400  
Fax +48 56 6771 - 410  
info.stolno@stieglmeyer.pl  
www.stieglmeyer.pl



Finden Sie Ihren Ansprechpartner auf unserer Website:  
*Find your local partner on our website:*  
[www.stieglmeyer.com/partner](http://www.stieglmeyer.com/partner)

[burmeier.com](http://burmeier.com)